



BANGALORE INTERNATIONAL HIGH- ICSE

ANNUAL PRACTICE WORKSHEET | 2019-2020

Subject- General Science

CLASS: IV
DATE: 16.03.2020

TIME: 2 ½ hrs
MAX. MARKS: 100
PROJECT MARKS: 20
THEORY MARKS : 80

GENERAL INSTRUCTIONS:-

1. Read all questions carefully.
2. All sections and questions are compulsory.
3. Write answers neatly and legibly.

Section-A (30 Marks)

Question 1: A: Fill in the blanks

[5]

- a) Chewing helps in breaking down food into _____ pieces and mixing it with the _____
- b) _____ are the openings on leaves that help in exchange of gases
- c) Frictional force is always in the direction _____ to that of the motion of the object
- d) A magnet has two poles the _____ pole and the _____ pole
- e) _____ are fixed units of measurement.

B: Write true or false

[5]

- a) Eating balanced and fiber rich diet helps in easier movement of food through the digestive system.
- b) Transpiration also cools the plant
- c) There are no difficulties caused by friction
- d) Longer lengths or distances are measured in centimeter.
- e) Light travels at a speed of 3×10^8 m/s

C: Match the following

[5]

- | | |
|--|---|
| a) Anus | (i) tiny channels that carry water and minerals to all parts of a leaf. |
| b) Vein | (ii) last organ of the digestive system |
| c) Kicking of a football | (iii) sprinkle powder |
| d) Striker not sliding properly on the carom board | (iv) time for the school interval |
| e) Watch | (v) frictional force |

D: Name the following

[5]

- a) The tube that carries urine from urinary bladder for excretion out of the body.
- b) The green colour pigment found in leaves.
- c) The first person to discover gravitational force
- d) Measuring device commonly used by tailors
- e) Tools used to measure body temperature

E: Co-relate the following

[5]

- a) Food prepared by plants: Glucose :: Stored food: _____
- b) Small intestine : Digestion is completed :: _____ : Extra water is absorbed from the food
- c) _____ : force exerted by magnet :: Muscular force: Force exerted by muscles
- d) Temperature : _____ :: Length : Metres
- e) Rectum: Stores faeces:: _____ : Stores urine

(1 of 3)

P.T.O.

F : Choose the odd one out by giving reason.

- a) Leaf blade, Root, Vein, Petiole
- b) Oil, Powder, Wax, Carpet
- c) Plastic, Wood, Pieces of paper, Iron nails (Hint. Forces)
- d) Gram, Kilogram, Milligram, Centimetre
- e) Kidneys, Food pipe, Ureters, Urethra

[5]

Section-B (50 Marks)

Question 2: What happens when

- a) A toy car is made to roll on a long carpet?
- b) Plants do not have a leaf?
- c) The gravitational force of the earth stops functioning
- d) ~~Water~~ is not used in our diet?
- e) Light is made to pass through a butter paper?
- f) We continuously ~~drive~~ a car?

[6]

Question 3: Give reasons

- a) Why do we need standard units of measurement?
- b) If you let a cricket ball and a guava roll down a ramp, which one of the two will reach the ground faster? Give reason.
- c) When light passes through a butter paper can you see an image on the other side clearly or not? Give reason.
- d) Why are some shadows dark and some faint?
- e) Why ramps are used in hospitals?

[5]

Question 4: Answer the following in brief:

- a) Define force of friction
- b) Name any two types of force
- c) What is reflection of light?
- d) Can force of friction work in the absence of gravitation?
- e) Define mass.
- f) Give an example for ^{each} push and pull

[6]

Question 5 : Answer the following in detail:

- a) Write four harmful effects of friction.
- b) Define photosynthesis. Name the part of a plant where it is carried on.
- c) What are lubricants? How to reduce ^{the} creaking sound of a door?
- d) What changes can force bring in an object?

[16]

- e) List any four properties of light.
- f) Define capacity. Name any two standard units to measure capacity.
- g) What is the difference between luminous and non-luminous object? Give two examples of each
- h) Name the standard units used to measure (i) Fruits (ii) Milk (iii) Table (iv) Body heat

Question 7 : Write any one use of the following

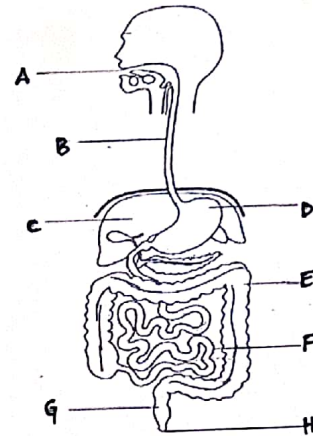
[6]

- a) Friction
- b) Beam balance
- c) Saliva
- d) Stem
- e) Sunlight
- f) Stomata

Question 8: Label the following diagram and answer the questions given

[8]

- a) Identify the organ system.
- b) Label the parts from 'A' to 'H'
- c) Name the pipe which connects 'A' to 'D'
- d) Write any one difference: between 'E' and 'F'

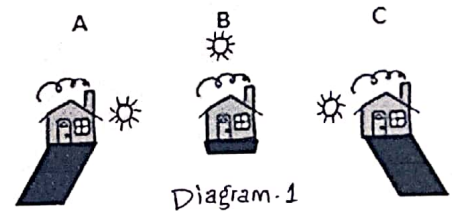


Question 9 :

[3]

Observe the following figures carefully.

- a) Write the difference between the images A, B, and C with respect to the light.



- b) Name the type of force shown in the diagram.
- c) Is it easy to lift the wooden log or not. Give reason

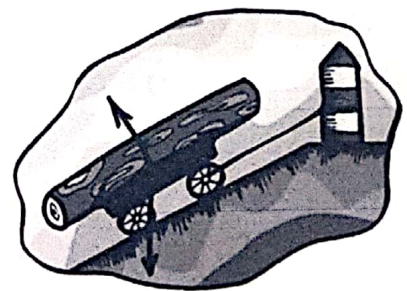


Diagram: 2

* * * * *

(3 of 3)